



**LSU at Kentucky**

02/23/22 Rupp Arena, Lexington  
2021-22 Men's Basketball

Game Time: 9:00 PM  
Game Duration: 2:26  
Attendance: 20,199

Officials: Terry Oglesby, Byron Jarrett, Patrick Evans

LSU - 66

Record: 19-9 (7-8)

NO.	Name	F	Min	FG	3P	FT	Rebounds			Fouls		TP	AS	TO	ST	Blocks		+/-
				M-A	M-A	M-A	OR	DR	TOT	PF	FD					BS	BA	
4	Darius Days	F	38:38	4-15	2-10	0-0	3	5	8	2	0	10	1	0	1	0	1	-7
5	Mwani Wilkinson	F	23:19	2-2	2-2	0-0	0	1	1	2	0	6	1	1	0	0	0	8
15	Efton Reid	C	25:29	2-2	0-0	1-3	0	2	2	5	4	5	0	1	1	0	0	-19
0	Brandon Murray	G	33:33	1-5	1-3	0-0	0	2	2	5	1	3	1	1	0	0	1	-10
1	Xavier Pinson	G	34:23	6-20	2-7	12-13	2	0	2	2	6	26	8	3	1	0	1	-2
13	Tari Eason		12:56	2-7	1-1	0-0	0	1	1	5	0	5	0	0	1	0	2	8
2	Eric Gaines		25:18	4-6	1-3	2-2	2	0	2	2	2	11	1	2	2	0	0	-4
3	Alex Fudge		06:21	0-0	0-0	0-0	0	0	0	2	0	0	0	0	0	0	0	2
11	Justice Williams		00:03	0-0	0-0	0-0	0	0	0	0	0	0	0	0	0	0	0	-1
Team							3	3	6			0			0			
<b>Totals</b>				21-57	9-26	15-18	10	14	24	25	13	66	12	8	6	0	5	-5

Shooting By Period		
1 <sup>st</sup> FG%	11-28	39.3%
3PT%	5-10	50.0%
FT%	4-5	80%
2 <sup>nd</sup> FG%	10-29	34.5%
3PT%	4-16	25.0%
FT%	11-13	84.6%
GM FG%	21-57	36.8%
3PT%	9-26	34.6%
FT%	15-18	83.3%

Dead Ball Rebounds: 3, 3

Technical Fouls: NONE

Kentucky - 71

Record: 23-5 (12-3)

NO.	Name	F	Min	FG	3P	FT	Rebounds			Fouls		TP	AS	TO	ST	Blocks		+/-
				M-A	M-A	M-A	OR	DR	TOT	PF	FD					BS	BA	
0	Jacob Toppin	F	39:04	2-7	1-2	3-4	1	5	6	1	2	8	0	0	1	1	0	4
12	Keion Brooks Jr.	F	21:22	2-5	0-0	2-2	0	1	1	3	1	6	0	3	0	1	0	-11
34	Oscar Tshiebwe	F	38:20	5-7	0-0	7-11	6	10	16	3	10	17	0	0	0	3	0	4
10	Davion Mintz	G	37:53	4-10	1-4	4-4	2	0	2	4	2	13	0	2	2	0	0	8
31	Kellan Grady	G	40:00	5-13	0-5	3-3	0	3	3	1	4	13	3	3	1	0	0	5
55	Lance Ware		04:11	0-0	0-0	1-2	0	0	0	1	2	1	0	1	0	0	0	1
11	Dontaie Allen		02:14	0-1	0-0	0-0	0	0	0	0	0	0	0	0	0	0	0	-3
23	Bryce Hopkins		15:34	5-6	0-1	3-6	2	2	4	0	4	13	0	1	0	0	0	16
4	Daimion Collins		01:22	0-0	0-0	0-0	0	0	0	1	0	0	0	1	0	0	0	1
Team							0	4	4			0		1				
<b>Totals</b>				23-49	2-12	23-32	11	25	36	14	25	71	3	12	4	5	0	5

Shooting By Period		
1 <sup>st</sup> FG%	8-24	33.3%
3PT%	0-5	0.0%
FT%	7-11	63.6%
2 <sup>nd</sup> FG%	15-25	60.0%
3PT%	2-7	28.6%
FT%	16-21	76.2%
GM FG%	23-49	46.9%
3PT%	2-12	16.7%
FT%	23-32	71.9%

Dead Ball Rebounds: 7, 1

Technical Fouls: Ware 1<sup>st</sup> 12:49

	LSU	UKY
Biggest lead	11 (1 <sup>st</sup> 7:17)	15 (2 <sup>nd</sup> 3:17)
Best Scoring Run	8 (1 <sup>st</sup> 15:49)	11 (2 <sup>nd</sup> 15:33)
Lead Changes	2	
Times Tied	2	
Time with Lead	20:54	17:50

Points from	LSU	UKY
Turnovers	23	5
Paint	22	34
Second Chance	10	17
Fast Breaks	8	5
Bench	16	14

	Period by Period Scoring		
	1st	2nd	TOT
LSU	31	35	66
UKY	23	48	71



**LSU at Kentucky**

02/23/22 Rupp Arena, Lexington  
2021-22 Men's Basketball

**Game Time:** 9:00 PM  
**Game Duration:** 2:26  
**Attendance:** 20,199

**Officials:** Terry Oglesby, Byron Jarrett, Patrick Evans

**Period 1**

**Quarter Starters:**

<b>UKY</b>	0 Toppin J	10 Mintz D	12 Brooks Jr. K	31 Grady K	34 Tshiebwe O
<b>LSU</b>	0 Murray B	1 Pinson X	4 Days D	5 Wilkinson M	15 Reid E

Game Time	UKY	Score	Diff	LSU
20:00	34 TSHIEBWE O jumpball lost			15 REID E jumpball won
19:32				4 DAYS D 2pt FG in the paint, layup missed
19:32				4 DAYS D offensive rebound (1)
19:32				4 DAYS D 2pt FG second chance in the paint, layup blocked
19:32	12 BROOKS JR. K block (1)			
19:32				offensive rebound (2)
19:32				1 PINSON X 2pt FG second chance in the paint, layup missed
19:32	0 TOPPIN J defensive rebound (1)			
19:14	34 TSHIEBWE O foul drawn (1)			15 REID E foul personal (1 - 1)
19:02	12 BROOKS JR. K 2pt FG in the paint, dunk, made (2)	<b>2-0</b>	<b>2</b>	
19:02	31 GRADY K assist (1)			
18:40				1 PINSON X 2pt FG in the paint, layup missed
18:38	34 TSHIEBWE O defensive rebound (1)			
18:20	0 TOPPIN J 2pt FG in the paint, dunk, made (2)	<b>4-0</b>	<b>4</b>	
17:58		<b>4-3</b>	<b>1</b>	4 DAYS D 3pt FG , jump shot made (3)
17:58				5 WILKINSON M assist (1)
17:38	34 TSHIEBWE O foul drawn (2)			15 REID E foul shooting (2 - 2)
17:38	34 TSHIEBWE O free throw 1 - 2 made (1)	<b>5-3</b>	<b>2</b>	
17:38				15 REID E substitution out
17:38				13 EASON T substitution in
17:38	34 TSHIEBWE O free throw 2 - 2 made (2)	<b>6-3</b>	<b>3</b>	
17:16				1 PINSON X 2pt FG in the paint, layup blocked
17:16	34 TSHIEBWE O block (1)			
17:12				offensive rebound (3)
17:07				13 EASON T 2pt FG second chance in the paint, layup missed
17:05	0 TOPPIN J defensive rebound (2)			
17:02	12 BROOKS JR. K 2pt FG outside the paint, jump shot missed			
16:58				5 WILKINSON M defensive rebound (1)
16:46		<b>6-6</b>	<b>0</b>	1 PINSON X 3pt FG , jump shot made (3)
16:39	10 MINTZ D turnover lost ball (1)			13 EASON T steal (1)
16:35		<b>6-8</b>	<b>-2</b>	1 PINSON X 2pt FG fast break from turnover in the paint, layup made (5)
16:14	31 GRADY K 2pt FG in the paint, jump shot missed			
16:09				4 DAYS D defensive rebound (2)
15:49		<b>6-11</b>	<b>-5</b>	13 EASON T 3pt FG , jump shot made (3)
15:49				1 PINSON X assist (1)
15:25	0 TOPPIN J 2pt FG outside the paint, jump shot missed			
15:22	34 TSHIEBWE O offensive rebound (2)			
15:21	34 TSHIEBWE O 2pt FG second chance in the paint, layup made (4)	<b>8-11</b>	<b>-3</b>	
15:19	34 TSHIEBWE O foul drawn (3)			13 EASON T foul shooting (1 - 3)
15:19				Timeout media
15:19	12 BROOKS JR. K substitution out			
15:19	55 WARE L substitution in			



**LSU at Kentucky**

02/23/22 Rupp Arena, Lexington  
2021-22 Men's Basketball

**Game Time:** 9:00 PM  
**Game Duration:** 2:26  
**Attendance:** 20,199

**Officials:** Terry Oglesby, Byron Jarrett, Patrick Evans

Game Time	UKY	Score	Diff	LSU
15:19	34 TSHIEBWE O free throw 1 - 1 made (5)	<b>9-11</b>	<b>-2</b>	
14:55		<b>9-13</b>	<b>-4</b>	13 EASON T 2pt FG in the paint, layup made (5)
14:55				1 PINSON X assist (2)
14:24	31 GRADY K 3pt FG , jump shot missed			
14:20	34 TSHIEBWE O offensive rebound (3)			
14:20	34 TSHIEBWE O 2pt FG second chance in the paint, layup made (7)	<b>11-13</b>	<b>-2</b>	
14:06				13 EASON T 2pt FG in the paint, layup blocked
14:06	34 TSHIEBWE O block (2)			
14:02	0 TOPPIN J defensive rebound (3)			
13:38	10 MINTZ D 2pt FG outside the paint, jump shot missed			
13:35				4 DAYS D defensive rebound (3)
13:06				13 EASON T 2pt FG in the paint, layup missed
13:04	34 TSHIEBWE O defensive rebound (4)			
12:50	34 TSHIEBWE O 2pt FG in the paint, layup missed			
12:49				defensive dead ball rebound (1)
12:49	55 WARE L foul drawn (1)			5 WILKINSON M foul personal (1 - 4)
12:49	55 WARE L foul contact dead ball technical (1 - 1)			
12:49	55 WARE L turnover offensive (1)			
12:49		<b>11-14</b>	<b>-3</b>	1 PINSON X free throw 1 - 2 made (6)
12:49	55 WARE L substitution out			
12:49	12 BROOKS JR. K substitution in			
12:49		<b>11-15</b>	<b>-4</b>	1 PINSON X free throw 2 - 2 made (7)
12:35				0 MURRAY B 2pt FG outside the paint, jump shot missed
12:31	defensive rebound (8)			
12:15	34 TSHIEBWE O 2pt FG outside the paint, jump shot made (9)	<b>13-15</b>	<b>-2</b>	
11:55				4 DAYS D 3pt FG , jump shot missed
11:53	0 TOPPIN J defensive rebound (4)			
11:35	12 BROOKS JR. K turnover lost ball (1)			1 PINSON X steal (1)
11:30		<b>13-17</b>	<b>-4</b>	1 PINSON X 2pt FG from turnover in the paint, layup made (9)
11:30	0 TOPPIN J 2pt FG in the paint, jump shot missed			
11:30				13 EASON T defensive rebound (1)
11:27		<b>13-20</b>	<b>-7</b>	1 PINSON X 3pt FG , jump shot made (12)
10:45	34 TSHIEBWE O foul drawn (4)			1 PINSON X foul personal (1 - 5)
10:45	Timeout media			
10:45	10 MINTZ D substitution out			
10:45	11 ALLEN D substitution in			
10:45				0 MURRAY B substitution out
10:45				5 WILKINSON M substitution out
10:45				2 GAINES E substitution in
10:45				3 FUDGE A substitution in
10:29	31 GRADY K 2pt FG outside the paint, jump shot made (2)	<b>15-20</b>	<b>-5</b>	
10:05		<b>15-22</b>	<b>-7</b>	1 PINSON X 2pt FG in the paint, layup made (14)
10:00	31 GRADY K turnover bad pass (1)			
09:45				1 PINSON X 3pt FG from turnover, jump shot missed
09:42				2 GAINES E offensive rebound (1)
09:27		<b>15-25</b>	<b>-10</b>	4 DAYS D 3pt FG from turnover second chance, jump shot made (6)
09:27				1 PINSON X assist (3)
09:23	Timeout 30 Sec			



**LSU at Kentucky**

02/23/22 Rupp Arena, Lexington  
2021-22 Men's Basketball

**Game Time:** 9:00 PM  
**Game Duration:** 2:26  
**Attendance:** 20,199

**Officials:** Terry Oglesby, Byron Jarrett, Patrick Evans

Game Time	UKY	Score	Diff	LSU
09:23	12 BROOKS JR. K substitution out			
09:23	55 WARE L substitution in			
09:11	34 TSHIEBWE O 2pt FG outside the paint, jump shot missed			
09:09				defensive rebound (9)
08:51				4 DAYS D 3pt FG , jump shot missed
08:48	34 TSHIEBWE O defensive rebound (5)			
08:40	11 ALLEN D 2pt FG in the paint, jump shot missed			
08:38				defensive dead ball rebound (2)
08:38	0 TOPPIN J substitution out			
08:38	11 ALLEN D substitution out			
08:38	10 MINTZ D substitution in			
08:38	23 HOPKINS B substitution in			
08:13				13 EASON T 2pt FG outside the paint, jump shot missed
08:10	defensive dead ball rebound (1)			
08:10	34 TSHIEBWE O foul drawn (5)			3 FUDGE A foul personal (1 - 6)
07:42	55 WARE L foul drawn (2)			13 EASON T foul shooting (2 - 7)
07:42	Timeout media			
07:42				13 EASON T substitution out
07:42				15 REID E substitution in
07:42	55 WARE L free throw 1 - 2 missed			
07:42	offensive dead ball rebound (2)			
07:42	55 WARE L free throw 2 - 2 made (1)	<b>16-25</b>	<b>-9</b>	
07:42	55 WARE L substitution out			
07:42	0 TOPPIN J substitution in			
07:17		<b>16-27</b>	<b>-11</b>	4 DAYS D 2pt FG in the paint, jump shot made (8)
07:01	23 HOPKINS B foul drawn (1)			3 FUDGE A foul shooting (2 - 8)
07:01	23 HOPKINS B free throw 1 - 2 missed			
07:01	offensive dead ball rebound (3)			
07:01				3 FUDGE A substitution out
07:01				0 MURRAY B substitution in
07:01	23 HOPKINS B free throw 2 - 2 missed			
07:01	34 TSHIEBWE O offensive rebound (6)			
06:50	10 MINTZ D 2pt FG second chance in the paint, layup missed			
06:50				defensive rebound (10)
06:26	10 MINTZ D steal (1)			1 PINSON X turnover lost ball (1)
06:10	31 GRADY K 2pt FG from turnover in the paint, jump shot made (4)	<b>18-27</b>	<b>-9</b>	
05:40	31 GRADY K foul drawn (1)			1 PINSON X foul offensive (2 - 9)
05:40				1 PINSON X turnover offensive (2)
05:40	23 HOPKINS B substitution out			
05:40	12 BROOKS JR. K substitution in			
05:23	34 TSHIEBWE O foul drawn (6)			4 DAYS D foul personal (1 - 10)
05:23	34 TSHIEBWE O free throw 1 - 2 missed			
05:23	offensive dead ball rebound (4)			
05:23				1 PINSON X substitution out
05:23				5 WILKINSON M substitution in
05:23	34 TSHIEBWE O free throw 2 - 2 made (10)	<b>19-27</b>	<b>-8</b>	
05:01		<b>19-29</b>	<b>-10</b>	15 REID E 2pt FG in the paint, dunk, made (2)
05:01				2 GAINES E assist (1)



**LSU at Kentucky**

02/23/22 Rupp Arena, Lexington  
2021-22 Men's Basketball

**Game Time:** 9:00 PM  
**Game Duration:** 2:26  
**Attendance:** 20,199

**Officials:** Terry Oglesby, Byron Jarrett, Patrick Evans

Game Time	UKY	Score	Diff	LSU
04:38	10 MINTZ D 3pt FG , jump shot missed			
04:35				defensive dead ball rebound (3)
04:35	31 GRADY K foul personal (1 - 2)			2 GAINES E foul drawn (1)
04:13				5 WILKINSON M turnover travel (1)
04:03	0 TOPPIN J 3pt FG from turnover, jump shot missed			
04:00				0 MURRAY B defensive rebound (1)
03:44	31 GRADY K steal (1)			2 GAINES E turnover bad pass (1)
03:36	31 GRADY K 3pt FG from turnover, jump shot missed			
03:33	0 TOPPIN J offensive rebound (5)			
03:21	0 TOPPIN J 2pt FG from turnover second chance outside the paint, jump shot missed			
03:18				4 DAYS D defensive rebound (4)
03:04	12 BROOKS JR. K foul personal (1 - 3)			0 MURRAY B foul drawn (1)
03:04	Timeout media			
03:04				2 GAINES E substitution out
03:04				1 PINSON X substitution in
02:53				4 DAYS D 3pt FG , jump shot missed
02:51	34 TSHIEBWE O defensive rebound (7)			
02:34	31 GRADY K 2pt FG in the paint, jump shot missed			
02:33				defensive rebound (13)
02:20				1 PINSON X 2pt FG outside the paint, jump shot missed
02:17				1 PINSON X offensive rebound (1)
01:58				1 PINSON X 2pt FG second chance in the paint, layup missed
01:56	defensive rebound (14)			
01:56				1 PINSON X substitution out
01:56				2 GAINES E substitution in
01:43	10 MINTZ D 2pt FG in the paint, layup made (2)	<b>21-29</b>	<b>-8</b>	
01:16	0 TOPPIN J steal (1)			0 MURRAY B turnover lost ball (1)
01:06	10 MINTZ D 3pt FG from turnover, jump shot missed			
01:00				15 REID E defensive rebound (1)
00:56				Timeout 30 Sec
00:56				0 MURRAY B substitution out
00:56				1 PINSON X substitution in
00:31	12 BROOKS JR. K foul shooting (2 - 4)			1 PINSON X foul drawn (1)
00:31	12 BROOKS JR. K substitution out			
00:31	4 COLLINS D substitution in			
00:31				1 PINSON X free throw 1 - 3 missed
00:31				offensive dead ball rebound (4)
00:31		<b>21-30</b>	<b>-9</b>	1 PINSON X free throw 2 - 3 made (15)
00:31		<b>21-31</b>	<b>-10</b>	1 PINSON X free throw 3 - 3 made (16)
00:31				1 PINSON X substitution out
00:31				0 MURRAY B substitution in
00:07	34 TSHIEBWE O foul drawn (7)			5 WILKINSON M foul shooting (2 - 11)
00:07	34 TSHIEBWE O free throw 1 - 2 made (11)	<b>22-31</b>	<b>-9</b>	
00:07				5 WILKINSON M substitution out
00:07				1 PINSON X substitution in
00:07	34 TSHIEBWE O free throw 2 - 2 made (12)	<b>23-31</b>	<b>-8</b>	
00:07	34 TSHIEBWE O substitution out			
00:07	11 ALLEN D substitution in			



Official Basketball Play by Play - First Half

### LSU at Kentucky

02/23/22 Rupp Arena, Lexington  
2021-22 Men's Basketball

Game Time: 9:00 PM

Game Duration: 2:26

Attendance: 20,199

Officials: Terry Oglesby, Byron Jarrett, Patrick Evans

Game Time	UKY	Score	Diff	LSU
00:00				1 PINSON X 3pt FG , jump shot missed
00:00	31 GRADY K defensive rebound (1)			
<b>END OF PERIOD</b>				
<b>UKY 23-31 LSU</b>				



**LSU at Kentucky**

02/23/22 Rupp Arena, Lexington  
2021-22 Men's Basketball

Game Time: 9:00 PM  
Game Duration: 2:26  
Attendance: 20,199

Officials: Terry Oglesby, Byron Jarrett, Patrick Evans

**LSU - 31**

NO.	Name	F	Min	FG			Rebounds			Fouls		TP	AS	TO	ST	Blocks		+/-
				M-A	3P	FT	OR	DR	TOT	PF	FD					BS	BA	
4	Darius Days	F	20:00	3-8	2-5	0-0	1	3	4	1	0	8	0	0	0	0	1	8
5	Mwani Wilkinson	F	14:31	0-0	0-0	0-0	0	1	1	2	0	0	1	1	0	0	0	7
15	Efton Reid	C	10:04	1-1	0-0	0-0	0	1	1	2	0	2	0	0	0	0	0	-4
0	Brandon Murray	G	15:51	0-1	0-0	0-0	0	1	1	0	1	0	0	1	0	0	0	2
1	Xavier Pinson	G	16:17	5-12	2-4	4-5	1	0	1	2	1	16	3	2	1	0	1	10
13	Tari Eason		09:56	2-6	1-1	0-0	0	1	1	2	0	5	0	0	1	0	1	12
2	Eric Gaines		09:37	0-0	0-0	0-0	1	0	1	0	1	0	1	1	0	0	0	1
3	Alex Fudge		03:44	0-0	0-0	0-0	0	0	0	2	0	0	0	0	0	0	0	4
Team							2	3	5			0		0				
<b>Totals</b>				11-28	5-10	4-5	5	10	15	11	3	31	5	5	2	0	3	8

Shooting By Period		
1 <sup>st</sup> FG%	11-28	39.3%
3PT%	5-10	50.0%
FT%	4-5	80%
GM FG%	11-28	39.3%
3PT%	5-10	50.0%
FT%	4-5	80.0%

Dead Ball Rebounds: 1, 3

Technical Fouls::NONE

**Kentucky - 23**

NO.	Name	F	Min	FG			Rebounds			Fouls		TP	AS	TO	ST	Blocks		+/-
				M-A	3P	FT	OR	DR	TOT	PF	FD					BS	BA	
0	Jacob Toppin	F	19:04	1-5	0-1	0-0	1	4	5	0	0	2	0	0	1	0	0	-9
12	Keion Brooks Jr.	F	13:16	1-2	0-0	0-0	0	0	0	2	0	2	0	1	0	1	0	-9
34	Oscar Tshiebwe	F	19:53	3-5	0-0	6-7	3	4	7	0	7	12	0	0	0	2	0	-8
10	Davion Mintz	G	17:53	1-5	0-2	0-0	0	0	0	0	0	2	0	1	1	0	0	-5
31	Kellan Grady	G	20:00	2-6	0-2	0-0	0	1	1	1	1	4	1	1	1	0	0	-8
55	Lance Ware		04:11	0-0	0-0	1-2	0	0	0	1	2	1	0	1	0	0	0	1
11	Dontaie Allen		02:14	0-1	0-0	0-0	0	0	0	0	0	0	0	0	0	0	0	-3
23	Bryce Hopkins		02:58	0-0	0-0	0-2	0	0	0	0	1	0	0	0	0	0	0	1
4	Daimion Collins		00:31	0-0	0-0	0-0	0	0	0	0	0	0	0	0	0	0	0	0
Team							0	2	2			0		0				
<b>Totals</b>				8-24	0-5	7-11	4	11	15	4	11	23	1	4	3	3	0	-8

Shooting By Period		
1 <sup>st</sup> FG%	8-24	33.3%
3PT%	0-5	0.0%
FT%	7-11	63.6%
GM FG%	8-24	33.3%
3PT%	0-5	0.0%
FT%	7-11	63.6%

Dead Ball Rebounds: 3, 1

Technical Fouls:Ware 1<sup>st</sup>12:49

	LSU	UKY	Points from		Period by Period Scoring				
<b>Biggest lead</b>	11 (1 <sup>st</sup> 7:17)	4 (1 <sup>st</sup> 18:20)	LSU	UKY	1st	2nd	TOT		
<b>Best Scoring Run</b>	8(1 <sup>st</sup> 15:49)	4(1 <sup>st</sup> 18:20)	9	3	LSU	31	35	66	
<b>Lead Changes</b>	1		Paint	12	12	UKY	23	48	71
<b>Times Tied</b>	1		Second Chance	3	5				
<b>Time with Lead</b>	16:35	02:16	Fast Breaks	2	0				
			Bench	5	1				



**LSU at Kentucky**

02/23/22 Rupp Arena, Lexington  
2021-22 Men's Basketball

**Game Time:** 9:00 PM  
**Game Duration:** 2:26  
**Attendance:** 20,199

**Officials:** Terry Oglesby, Byron Jarrett, Patrick Evans

**Period 2**

**Quarter Starters:**

<b>UKY</b>	0 Toppin J	10 Mintz D	12 Brooks Jr. K	31 Grady K	34 Tshiebwe O
<b>LSU</b>	0 Murray B	1 Pinson X	4 Days D	5 Wilkinson M	15 Reid E

Game Time	UKY	Score	Diff	LSU
20:00	4 COLLINS D substitution out			
20:00	11 ALLEN D substitution out			
20:00	12 BROOKS JR. K substitution in			
20:00	34 TSHIEBWE O substitution in			
20:00				2 GAINES E substitution out
20:00				5 WILKINSON M substitution in
19:49	34 TSHIEBWE O foul drawn (8)			4 DAYS D foul shooting (2 - 1)
19:49	34 TSHIEBWE O free throw 1 - 2 missed			
19:49	offensive dead ball rebound (5)			
19:49	34 TSHIEBWE O free throw 2 - 2 missed			
19:49				15 REID E defensive rebound (2)
19:22				4 DAYS D 3pt FG , jump shot missed
19:19	34 TSHIEBWE O defensive rebound (8)			
19:13	12 BROOKS JR. K 2pt FG outside the paint, jump shot missed			
19:10	10 MINTZ D offensive rebound (1)			
19:08	10 MINTZ D 3pt FG second chance, jump shot made (5)	<b>26-31</b>	<b>-5</b>	
18:59		<b>26-33</b>	<b>-7</b>	15 REID E 2pt FG outside the paint, jump shot made (4)
18:59				1 PINSON X assist (4)
18:49	31 GRADY K 2pt FG in the paint, layup made (6)	<b>28-33</b>	<b>-5</b>	
18:30	12 BROOKS JR. K foul personal (3 - 1)			1 PINSON X foul drawn (2)
18:30	12 BROOKS JR. K substitution out			
18:30	23 HOPKINS B substitution in			
18:24				1 PINSON X 3pt FG , jump shot missed
18:21	34 TSHIEBWE O defensive rebound (9)			
18:10	23 HOPKINS B 3pt FG , jump shot missed			
18:06				0 MURRAY B defensive rebound (2)
17:51	jump ball situation			
17:38		<b>28-36</b>	<b>-8</b>	5 WILKINSON M 3pt FG , jump shot made (3)
17:38				0 MURRAY B assist (1)
17:16	23 HOPKINS B 2pt FG in the paint, jump shot made (2)	<b>30-36</b>	<b>-6</b>	
17:00				0 MURRAY B 3pt FG , jump shot missed
16:57	31 GRADY K defensive rebound (2)			
16:52	23 HOPKINS B foul drawn (2)			0 MURRAY B foul shooting (1 - 2)
16:52	23 HOPKINS B free throw fast break 1 - 2 made (3)	<b>31-36</b>	<b>-5</b>	
16:52				15 REID E substitution out
16:52				13 EASON T substitution in
16:52	23 HOPKINS B free throw fast break 2 - 2 made (4)	<b>32-36</b>	<b>-4</b>	
16:28				13 EASON T 2pt FG in the paint, layup blocked
16:28	0 TOPPIN J block (1)			
16:28	34 TSHIEBWE O defensive rebound (10)			
16:28	10 MINTZ D 2pt FG in the paint, layup made (7)	<b>34-36</b>	<b>-2</b>	
15:57				4 DAYS D 2pt FG in the paint, layup missed
15:54	23 HOPKINS B defensive rebound (1)			





**LSU at Kentucky**

02/23/22 Rupp Arena, Lexington  
2021-22 Men's Basketball

**Game Time:** 9:00 PM  
**Game Duration:** 2:26  
**Attendance:** 20,199

**Officials:** Terry Oglesby, Byron Jarrett, Patrick Evans

Game Time	UKY	Score	Diff	LSU
15:48	Timeout media			
15:41	23 HOPKINS B 2pt FG in the paint, layup made (6)	<b>36-36</b>	<b>0</b>	
15:41	23 HOPKINS B foul drawn (3)			0 MURRAY B foul shooting (2 - 3)
15:41				5 WILKINSON M substitution out
15:41				2 GAINES E substitution in
15:41	23 HOPKINS B free throw 1 - 1 missed			
15:41	34 TSHIEBWE O offensive rebound (11)			
15:38	10 MINTZ D 3pt FG second chance, jump shot missed			
15:34	23 HOPKINS B offensive rebound (2)			
15:34	23 HOPKINS B 2pt FG second chance in the paint, layup made (8)	<b>38-36</b>	<b>2</b>	
15:33	23 HOPKINS B foul drawn (4)			0 MURRAY B foul shooting (3 - 4)
15:33	23 HOPKINS B free throw 1 - 1 made (9)	<b>39-36</b>	<b>3</b>	
15:19	10 MINTZ D foul shooting (1 - 2)			1 PINSON X foul drawn (3)
15:19		<b>39-37</b>	<b>2</b>	1 PINSON X free throw 1 - 2 made (17)
15:19		<b>39-38</b>	<b>1</b>	1 PINSON X free throw 2 - 2 made (18)
14:58	31 GRADY K foul drawn (2)			2 GAINES E foul personal (1 - 5)
14:42	31 GRADY K 3pt FG, jump shot missed			
14:40	offensive dead ball rebound (6)			
14:40	34 TSHIEBWE O foul drawn (9)			13 EASON T foul personal (3 - 6)
14:33	0 TOPPIN J 2pt FG second chance outside the paint, jump shot missed			
14:30	10 MINTZ D offensive rebound (2)			
14:29	10 MINTZ D foul drawn (1)			13 EASON T foul personal (4 - 7)
14:29				13 EASON T substitution out
14:29				15 REID E substitution in
14:29	10 MINTZ D 1&1 free throw 1 made (8)	<b>40-38</b>	<b>2</b>	
14:29	10 MINTZ D 1&1 free throw 2 made (9)	<b>41-38</b>	<b>3</b>	
14:06				1 PINSON X 2pt FG in the paint, layup missed
14:02				1 PINSON X offensive rebound (2)
14:02				1 PINSON X 2pt FG second chance in the paint, layup missed
14:01	34 TSHIEBWE O defensive rebound (12)			
13:48	23 HOPKINS B 2pt FG outside the paint, jump shot made (11)	<b>43-38</b>	<b>5</b>	
13:46				Timeout 30 Sec
13:25				0 MURRAY B 2pt FG in the paint, layup blocked
13:25	34 TSHIEBWE O block (3)			
13:20				4 DAYS D offensive rebound (5)
13:20				4 DAYS D 3pt FG second chance, jump shot missed
13:20	34 TSHIEBWE O defensive rebound (13)			
12:54	10 MINTZ D 2pt FG in the paint, jump shot missed			
12:51				4 DAYS D defensive rebound (6)
12:36				1 PINSON X 2pt FG outside the paint, jump shot missed
12:33	23 HOPKINS B defensive rebound (3)			
12:31	23 HOPKINS B turnover bad pass (1)			2 GAINES E steal (1)
12:23		<b>43-40</b>	<b>3</b>	2 GAINES E 2pt FG fast break from turnover in the paint, dunk, made (2)
12:16	34 TSHIEBWE O 2pt FG in the paint, dunk, made (14)	<b>45-40</b>	<b>5</b>	
12:16	31 GRADY K assist (2)			
11:57	34 TSHIEBWE O foul personal (1 - 3)			15 REID E foul drawn (1)
11:57	Timeout media			



**LSU at Kentucky**

02/23/22 Rupp Arena, Lexington  
2021-22 Men's Basketball

**Game Time:** 9:00 PM  
**Game Duration:** 2:26  
**Attendance:** 20,199

**Officials:** Terry Oglesby, Byron Jarrett, Patrick Evans

Game Time	UKY	Score	Diff	LSU
11:57	23 HOPKINS B substitution out			
11:57	12 BROOKS JR. K substitution in			
11:57				0 MURRAY B substitution out
11:57				3 FUDGE A substitution in
11:38				2 GAINES E 3pt FG , jump shot missed
11:35	0 TOPPIN J defensive rebound (6)			
11:07	12 BROOKS JR. K 2pt FG in the paint, jump shot made (4)	<b>47-40</b>	<b>7</b>	
10:53				4 DAYS D 3pt FG , jump shot missed
10:50	defensive rebound (29)			
10:32	31 GRADY K 3pt FG , jump shot missed			
10:29				4 DAYS D defensive rebound (7)
10:12				1 PINSON X turnover bad pass (3)
10:05	31 GRADY K turnover bad pass (2)			
10:05				3 FUDGE A substitution out
10:05				4 DAYS D substitution out
10:05				5 WILKINSON M substitution in
10:05				13 EASON T substitution in
09:42	34 TSHIEBWE O foul shooting (2 - 4)			2 GAINES E foul drawn (2)
09:42		<b>47-41</b>	<b>6</b>	2 GAINES E free throw 1 - 2 made (3)
09:42		<b>47-42</b>	<b>5</b>	2 GAINES E free throw 2 - 2 made (4)
09:42				1 PINSON X substitution out
09:42				0 MURRAY B substitution in
09:28	31 GRADY K foul drawn (3)			13 EASON T foul shooting (5 - 8)
09:28				13 EASON T substitution out
09:28				4 DAYS D substitution in
09:28	31 GRADY K free throw 1 - 2 made (7)	<b>48-42</b>	<b>6</b>	
09:28	31 GRADY K free throw 2 - 2 made (8)	<b>49-42</b>	<b>7</b>	
09:06	34 TSHIEBWE O foul shooting (3 - 5)			15 REID E foul drawn (2)
09:06				15 REID E free throw 1 - 2 missed
09:06				offensive dead ball rebound (5)
09:06		<b>49-43</b>	<b>6</b>	15 REID E free throw 2 - 2 made (5)
09:02	31 GRADY K turnover lost ball (3)			4 DAYS D steal (1)
08:58		<b>49-45</b>	<b>4</b>	2 GAINES E 2pt FG fast break from turnover in the paint, layup made (6)
08:39	10 MINTZ D foul drawn (2)			15 REID E foul shooting (3 - 9)
08:39	10 MINTZ D free throw 1 - 2 made (10)	<b>50-45</b>	<b>5</b>	
08:39	34 TSHIEBWE O substitution out			
08:39	4 COLLINS D substitution in			
08:39	10 MINTZ D free throw 2 - 2 made (11)	<b>51-45</b>	<b>6</b>	
08:21	10 MINTZ D steal (2)			2 GAINES E turnover lost ball (2)
07:58	4 COLLINS D turnover bad pass (1)			15 REID E steal (1)
07:48	4 COLLINS D foul personal (1 - 6)			15 REID E foul drawn (3)
07:48		Timeout media		
07:48	4 COLLINS D substitution out			
07:48	34 TSHIEBWE O substitution in			
07:48				5 WILKINSON M substitution out
07:48				1 PINSON X substitution in
07:44				15 REID E turnover bad pass (1)
07:34	12 BROOKS JR. K 2pt FG from turnover outside the paint, jump shot missed			



**LSU at Kentucky**

02/23/22 Rupp Arena, Lexington  
2021-22 Men's Basketball

**Game Time:** 9:00 PM  
**Game Duration:** 2:26  
**Attendance:** 20,199

**Officials:** Terry Oglesby, Byron Jarrett, Patrick Evans

Game Time	UKY	Score	Diff	LSU
07:31	34 TSHIEBWE O offensive rebound (14)			
07:19	31 GRADY K 2pt FG from turnover second chance in the paint, jump shot missed			
07:10	34 TSHIEBWE O offensive rebound (15)			
07:10	34 TSHIEBWE O 2pt FG from turnover second chance in the paint, layup made (16)	<b>53-45</b>	<b>8</b>	
07:00				1 PINSON X 3pt FG , jump shot missed
06:56				offensive rebound (22)
06:56	12 BROOKS JR. K substitution out			
06:56	23 HOPKINS B substitution in			
06:47		<b>53-48</b>	<b>5</b>	2 GAINES E 3pt FG second chance, jump shot made (9)
06:47				1 PINSON X assist (5)
06:16	10 MINTZ D 2pt FG outside the paint, jump shot made (13)	<b>55-48</b>	<b>7</b>	
05:46				2 GAINES E 3pt FG , jump shot missed
05:42				offensive dead ball rebound (6)
05:42	0 TOPPIN J foul personal (1 - 7)			15 REID E foul drawn (4)
05:42				15 REID E 1&1 free throw 1 missed
05:42	defensive rebound (32)			
05:25	31 GRADY K 2pt FG in the paint, layup made (10)	<b>57-48</b>	<b>9</b>	
05:25	31 GRADY K foul drawn (4)			15 REID E foul shooting (4 - 10)
05:25	31 GRADY K free throw 1 - 1 made (11)	<b>58-48</b>	<b>10</b>	
05:10				0 MURRAY B 3pt FG , jump shot missed
05:07	31 GRADY K defensive rebound (3)			
04:57	31 GRADY K 2pt FG in the paint, layup made (13)	<b>60-48</b>	<b>12</b>	
04:39	10 MINTZ D foul personal (2 - 8)			1 PINSON X foul drawn (4)
04:39				4 DAYS D substitution out
04:39				3 FUDGE A substitution in
04:39		<b>60-49</b>	<b>11</b>	1 PINSON X 1&1 free throw 1 made (19)
04:39		<b>60-50</b>	<b>10</b>	1 PINSON X 1&1 free throw 2 made (20)
04:08	31 GRADY K 3pt FG , jump shot missed			
04:02	23 HOPKINS B offensive rebound (4)			
04:02	23 HOPKINS B 2pt FG second chance in the paint, layup made (13)	<b>62-50</b>	<b>12</b>	
03:54				Timeout 30 Sec
03:54				3 FUDGE A substitution out
03:54				4 DAYS D substitution in
03:48				4 DAYS D 3pt FG , jump shot missed
03:45	34 TSHIEBWE O defensive rebound (16)			
03:17	0 TOPPIN J 3pt FG , jump shot made (5)	<b>65-50</b>	<b>15</b>	
03:17	31 GRADY K assist (3)			
02:46		<b>65-52</b>	<b>13</b>	1 PINSON X 2pt FG in the paint, layup made (22)
02:13	0 TOPPIN J foul drawn (1)			15 REID E foul shooting (5 - 11)
02:12				15 REID E substitution out
02:12				5 WILKINSON M substitution in
02:11	0 TOPPIN J free throw 1 - 2 missed			
02:11	offensive dead ball rebound (7)			
02:11	0 TOPPIN J free throw 2 - 2 made (6)	<b>66-52</b>	<b>14</b>	
01:59				1 PINSON X 3pt FG , jump shot missed
01:56				4 DAYS D offensive rebound (8)



**LSU at Kentucky**

02/23/22 Rupp Arena, Lexington  
2021-22 Men's Basketball

**Game Time:** 9:00 PM  
**Game Duration:** 2:26  
**Attendance:** 20,199

**Officials:** Terry Oglesby, Byron Jarrett, Patrick Evans

Game Time	UKY	Score	Diff	LSU
01:52		<b>66-54</b>	<b>12</b>	2 GAINES E 2pt FG second chance in the paint, layup made (11)
01:52				4 DAYS D assist (1)
01:36	turnover 10 sec back court (9)			
01:36	23 HOPKINS B substitution out			
01:36	12 BROOKS JR. K substitution in			
01:29		<b>66-57</b>	<b>9</b>	5 WILKINSON M 3pt FG from turnover, jump shot made (6)
01:29				1 PINSON X assist (6)
01:29				Timeout 60 Sec
01:25	0 TOPPIN J foul drawn (2)			2 GAINES E foul personal (2 - 12)
01:25	0 TOPPIN J free throw fast break 1 - 2 made (7)	<b>67-57</b>	<b>10</b>	
01:25	34 TSHIEBWE O substitution out			
01:25	23 HOPKINS B substitution in			
01:25	0 TOPPIN J free throw fast break 2 - 2 made (8)	<b>68-57</b>	<b>11</b>	
01:17	10 MINTZ D foul personal (3 - 9)			1 PINSON X foul drawn (5)
01:17		<b>68-58</b>	<b>10</b>	1 PINSON X 1&1 free throw 1 made (23)
01:17	23 HOPKINS B substitution out			
01:17	34 TSHIEBWE O substitution in			
01:17		<b>68-59</b>	<b>9</b>	1 PINSON X 1&1 free throw 2 made (24)
01:11	12 BROOKS JR. K turnover bad pass (2)			2 GAINES E steal (2)
01:06		<b>68-62</b>	<b>6</b>	0 MURRAY B 3pt FG from turnover, jump shot made (3)
01:06				1 PINSON X assist (7)
00:44	Timeout 30 Sec			
00:43	10 MINTZ D turnover travel (2)			
00:34	10 MINTZ D foul shooting (4 - 10)			1 PINSON X foul drawn (6)
00:34		<b>68-63</b>	<b>5</b>	1 PINSON X free throw 1 - 2 made (25)
00:34		<b>68-64</b>	<b>4</b>	1 PINSON X free throw 2 - 2 made (26)
00:34	12 BROOKS JR. K turnover (3)			
00:34	34 TSHIEBWE O substitution out			
00:34	23 HOPKINS B substitution in			
00:26				1 PINSON X 2pt FG from turnover in the paint, layup missed
00:23	12 BROOKS JR. K defensive rebound (1)			
00:13	12 BROOKS JR. K foul drawn (1)			0 MURRAY B foul personal (4 - 13)
00:13	12 BROOKS JR. K free throw 1 - 2 made (5)	<b>69-64</b>	<b>5</b>	
00:13	12 BROOKS JR. K free throw 2 - 2 made (6)	<b>70-64</b>	<b>6</b>	
00:07				4 DAYS D 3pt FG , jump shot missed
00:05				2 GAINES E offensive rebound (2)
00:03		<b>70-66</b>	<b>4</b>	4 DAYS D 2pt FG second chance in the paint, layup made (10)
00:03				1 PINSON X assist (8)
00:03	Timeout 60 Sec			
00:03	12 BROOKS JR. K substitution out			
00:03	34 TSHIEBWE O substitution in			
00:03	Timeout 30 Sec			
00:03	34 TSHIEBWE O foul drawn (10)			0 MURRAY B foul personal (5 - 14)
00:03				0 MURRAY B substitution out
00:03				11 WILLIAMS J substitution in
00:03	34 TSHIEBWE O free throw fast break 1 - 2 missed			
00:03	offensive dead ball rebound (8)			
00:03	34 TSHIEBWE O free throw fast break 2 - 2 made (17)	<b>71-66</b>	<b>5</b>	



Official Basketball Play by Play - Second Half

### LSU at Kentucky

02/23/22 Rupp Arena, Lexington  
2021-22 Men's Basketball

Game Time: 9:00 PM

Game Duration: 2:26

Attendance: 20,199

Officials: Terry Oglesby, Byron Jarrett, Patrick Evans

Game Time	UKY	Score	Diff	LSU
00:03	34 TSHIEBWE O substitution out			
00:03	12 BROOKS JR. K substitution in			
END OF GAME				
UKY 71-66 LSU				



**LSU at Kentucky**

02/23/22 Rupp Arena, Lexington  
2021-22 Men's Basketball

Game Time: 9:00 PM  
Game Duration: 2:26  
Attendance: 20,199

Officials: Terry Oglesby, Byron Jarrett, Patrick Evans

**LSU - 35**

NO.	Name	Min	FG			Rebounds			Fouls		TP	AS	TO	ST	Blocks		+/-
			M-A	M-A	M-A	OR	DR	TOT	PF	FD					BS	BA	
4	Darius Days	F 18:38	1-7	0-5	0-0	2	2	4	1	0	2	1	0	1	0	0	-15
5	Mwani Wilkinson	F 08:48	2-2	2-2	0-0	0	0	0	0	0	6	0	0	0	0	0	1
15	Efton Reid	C 15:25	1-1	0-0	1-3	0	1	1	3	4	3	0	1	1	0	0	-15
0	Brandon Murray	G 17:42	1-4	1-3	0-0	0	1	1	5	0	3	1	0	0	0	1	-12
1	Xavier Pinson	G 18:06	1-8	0-3	8-8	1	0	1	0	5	10	5	1	0	0	0	-12
13	Tari Eason	03:00	0-1	0-0	0-0	0	0	0	3	0	0	0	0	0	0	1	-4
2	Eric Gaines	15:41	4-6	1-3	2-2	1	0	1	2	1	11	0	1	2	0	0	-5
3	Alex Fudge	02:37	0-0	0-0	0-0	0	0	0	0	0	0	0	0	0	0	0	-2
11	Justice Williams	00:03	0-0	0-0	0-0	0	0	0	0	0	0	0	0	0	0	0	-1
Team						1	0	1			0						
<b>Totals</b>			10-29	4-16	11-13	5	4	9	14	10	35	7	3	4	0	2	-13

Shooting By Period		
2 <sup>nd</sup> FG%	10-29	34.5%
3PT%	4-16	25.0%
FT%	11-13	84.6%
GM FG%	10-29	34.5%
3PT%	4-16	25.0%
FT%	11-13	84.6%

Dead Ball Rebounds: 2, 0

Technical Fouls::NONE

**Kentucky - 48**

NO.	Name	Min	FG			Rebounds			Fouls		TP	AS	TO	ST	Blocks		+/-
			M-A	M-A	M-A	OR	DR	TOT	PF	FD					BS	BA	
0	Jacob Toppin	F 20:00	1-2	1-1	3-4	0	1	1	1	2	6	0	0	0	1	0	13
12	Keion Brooks Jr.	F 08:06	1-3	0-0	2-2	0	1	1	1	1	4	0	2	0	0	0	-2
34	Oscar Tshiebwe	F 18:27	2-2	0-0	1-4	3	6	9	3	3	5	0	0	0	1	0	12
10	Davion Mintz	G 20:00	3-5	1-2	4-4	2	0	2	4	2	11	0	1	1	0	0	13
31	Kellan Grady	G 20:00	3-7	0-3	3-3	0	2	2	0	3	9	2	2	0	0	0	13
11	Dontaie Allen	00:00	0-0	0-0	0-0	0	0	0	0	0	0	0	0	0	0	0	0
23	Bryce Hopkins	12:36	5-6	0-1	3-4	2	2	4	0	3	13	0	1	0	0	0	15
4	Daimion Collins	00:51	0-0	0-0	0-0	0	0	0	1	0	0	0	1	0	0	0	1
Team						0	2	2			0						
<b>Totals</b>			15-25	2-7	16-21	7	14	21	10	14	48	2	8	1	2	0	13

Shooting By Period		
2 <sup>nd</sup> FG%	15-25	60.0%
3PT%	2-7	28.6%
FT%	16-21	76.2%
GM FG%	15-25	60.0%
3PT%	2-7	28.6%
FT%	16-21	76.2%

Dead Ball Rebounds: 4, 0

Technical Fouls::NONE

	LSU	UKY
Biggest lead	8 (2 <sup>nd</sup> 19:49)	15 (2 <sup>nd</sup> 3:17)
Best Scoring Run	7(2 <sup>nd</sup> 0:34)	11(2 <sup>nd</sup> 15:33)
Lead Changes	1	
Times Tied	1	
Time with Lead	04:08	15:34

Points from	LSU	UKY
Turnovers	14	2
Paint	10	22
Second Chance	7	12
Fast Breaks	6	5
Bench	11	13

	Period by Period Scoring		
	1st	2nd	TOT
LSU	31	35	66
UKY	23	48	71



**LSU at Kentucky**

02/23/22 Rupp Arena, Lexington  
2021-22 Men's Basketball

**Game Time:** 9:00 PM  
**Game Duration:** 2:26  
**Attendance:** 20,199

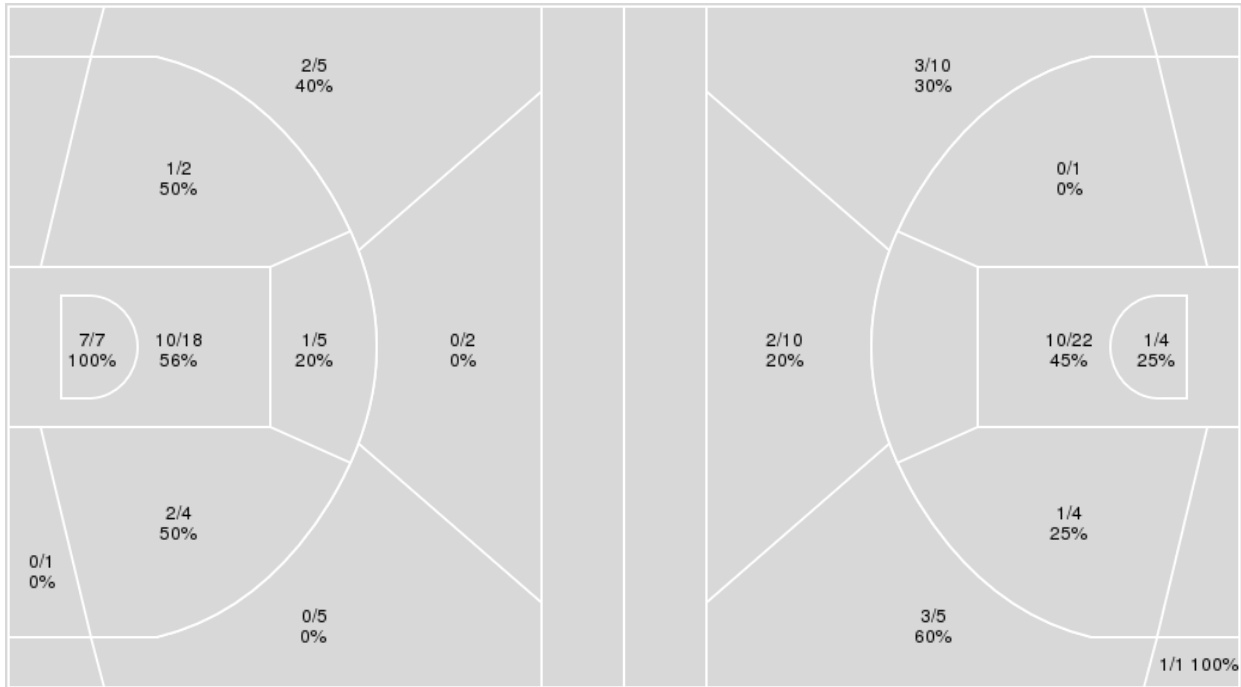
**Officials:** Terry Oglesby, Byron Jarrett, Patrick Evans

{ Players => 0, 1, 2, 3, 4, 10, 11, 12, 14, 20, 21, 23, 25, 31, 34, 55; } FG  
Types => All; Results => All;

{ Players => 0, 1, 2, 3, 4, 5, 10, 11, 13, 15, 20, 21, 22, 24, 25, 30, 44; }  
FG Types => All; Results => All;

**Kentucky**

**LSU**



Kentucky	M/A	%
Field Goals	23/49	47
2 Points	21/37	57
3 Points	2/12	17
Free Throws	23/32	72

LSU	M/A	%
Field Goals	21/57	37
2 Points	12/31	39
3 Points	9/26	35
Free Throws	15/18	83



**LSU at Kentucky**

02/23/22 Rupp Arena, Lexington  
2021-22 Men's Basketball

Game Time: 9:00 PM  
Game Duration: 2:26  
Attendance: 20,199

Officials: Terry Oglesby, Byron Jarrett, Patrick Evans

**LSU**

No	Name	Mins		Score		Points Diff		Points per Min		Assists		Rebounds		Steals		Turnovers	
		On	Off	On	Off	On	Off	On	Off	On	Off	On	Off	On	Off	On	Off
0	Brandon Murray	33:33	06:27	55 - 65	11 - 6	-10	5	1.64	1.71	11	1	21	3	6	0	7	1
1	Xavier Pinson	34:23	05:37	61 - 63	5 - 8	-2	-3	1.77	0.89	11	1	21	3	4	2	4	4
2	Eric Gaines	25:18	14:42	41 - 45	25 - 26	-4	-1	1.62	1.70	7	5	13	11	4	2	8	0
3	Alex Fudge	06:21	33:39	9 - 7	57 - 64	2	-7	1.42	1.69	1	11	3	21	0	6	1	7
4	Darius Days	38:38	01:22	62 - 69	4 - 2	-7	2	1.60	2.93	12	0	24	0	6	0	8	0
5	Mwani Wilkinson	23:19	16:41	48 - 40	18 - 31	8	-13	2.06	1.08	10	2	16	8	5	1	4	4
11	Justice Williams	00:03	39:57	0 - 1	66 - 70	-1	-4	0.00	1.65	0	12	0	24	0	6	0	8
13	Tari Eason	12:56	27:04	26 - 18	40 - 53	8	-13	2.01	1.48	3	9	7	17	2	4	0	8
15	Efton Reid	25:29	14:31	28 - 47	38 - 24	-19	14	1.10	2.62	5	7	15	9	3	3	8	0

**Kentucky**

No	Name	Mins		Score		Points Diff		Points per Min		Assists		Rebounds		Steals		Turnovers	
		On	Off	On	Off	On	Off	On	Off	On	Off	On	Off	On	Off	On	Off
0	Jacob Toppin	39:04	00:56	70 - 66	1 - 0	4	1	1.79	1.07	3	0	36	0	4	0	12	0
4	Daimion Collins	01:22	38:38	3 - 2	68 - 64	1	4	2.20	1.76	0	3	1	35	1	3	1	11
10	Davion Mintz	37:53	02:07	69 - 61	2 - 5	8	-3	1.82	0.94	3	0	35	1	4	0	11	1
11	Dontaie Allen	02:14	37:46	2 - 5	69 - 61	-3	8	0.90	1.83	0	3	2	34	0	4	1	11
12	Keion Brooks Jr.	21:22	18:38	32 - 43	39 - 23	-11	16	1.50	2.09	1	2	16	20	3	1	9	3
23	Bryce Hopkins	15:34	24:26	37 - 21	34 - 45	16	-11	2.38	1.39	2	1	16	20	1	3	2	10
31	Kellan Grady	40:00	00:00	71 - 66	0 - 0	5	0	1.78	0.00	3	0	36	0	4	0	12	0
34	Oscar Tshiebwe	38:20	01:40	67 - 63	4 - 3	4	1	1.75	2.40	3	0	34	2	3	1	11	1
55	Lance Ware	04:11	35:49	4 - 3	67 - 63	1	4	0.96	1.87	0	3	4	32	0	4	1	11





**LSU at Kentucky**

02/23/22 Rupp Arena, Lexington  
2021-22 Men's Basketball

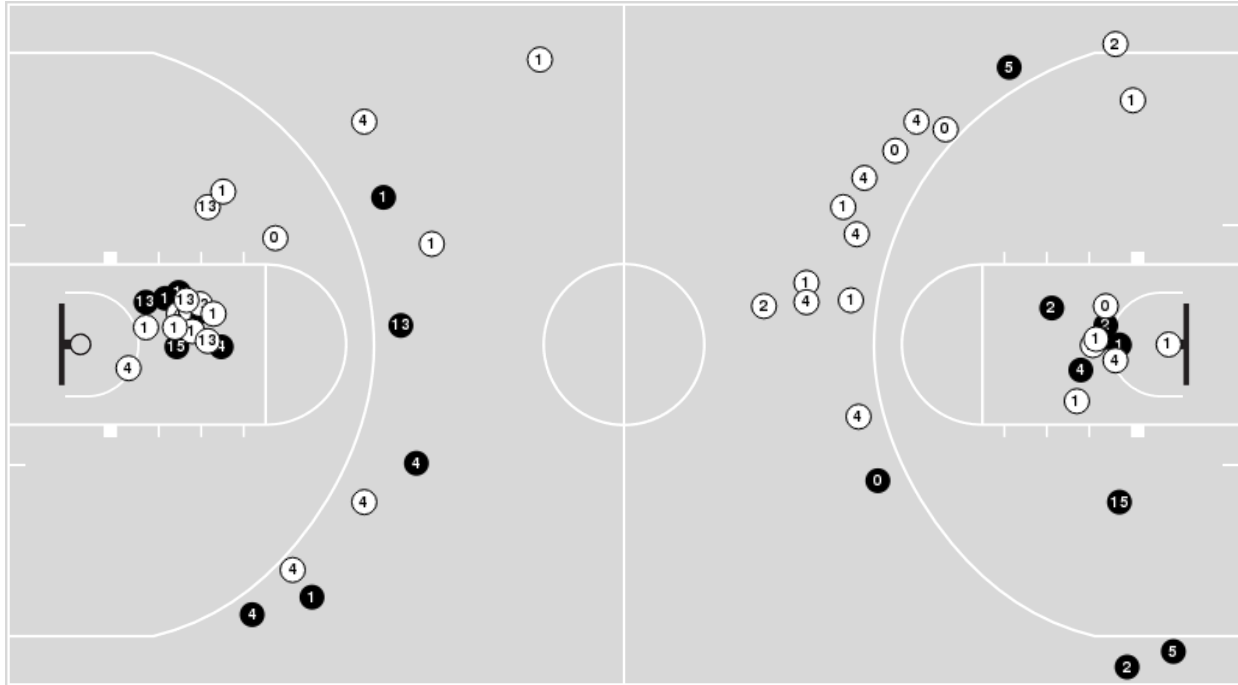
**Game Time:** 9:00 PM  
**Game Duration:** 2:26  
**Attendance:** 20,199

**Officials:** Terry Oglesby, Byron Jarrett, Patrick Evans

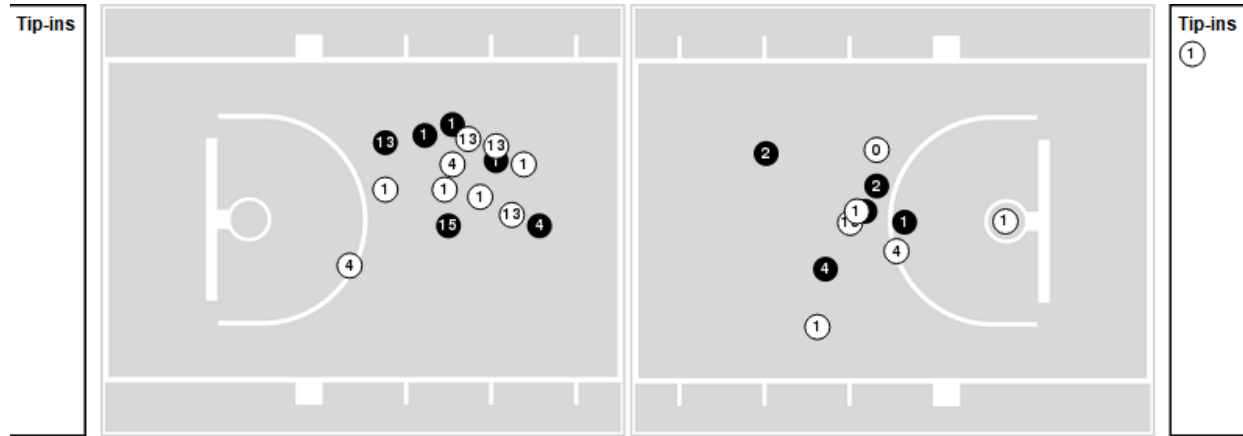
Players => 0, 1, 2, 3, 4, 5, 10, 11, 13, 15, 20, 21, 22, 24, 25, 30, 44 FG Types=>All Results=>All

**LSU**

**All Field Goals**



**Blow Up Chart**



● Made    ○ Missed    N - Player Number

LSU	M/A	%
Field Goals	21/57	37
2 Points	12/31	39
3 Points	9/26	35
Free Throws	15/18	83

LSU	M/A	%
Points in the Paint	22 (11 / 26)	42
Fast Break Points	8 (5/5)	100
Second Chance Points	10 (4/11)	36
Effective FG%	45	



**LSU at Kentucky**

02/23/22 Rupp Arena, Lexington  
2021-22 Men's Basketball

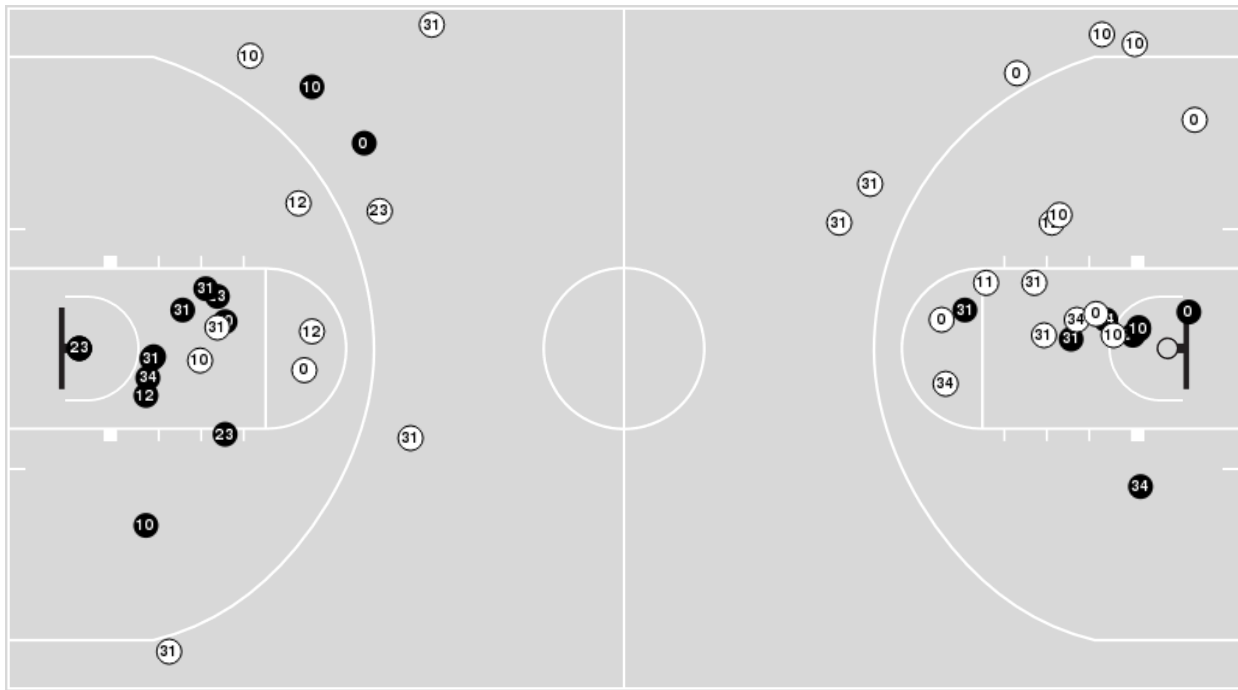
**Game Time:** 9:00 PM  
**Game Duration:** 2:26  
**Attendance:** 20,199

**Officials:** Terry Oglesby, Byron Jarrett, Patrick Evans

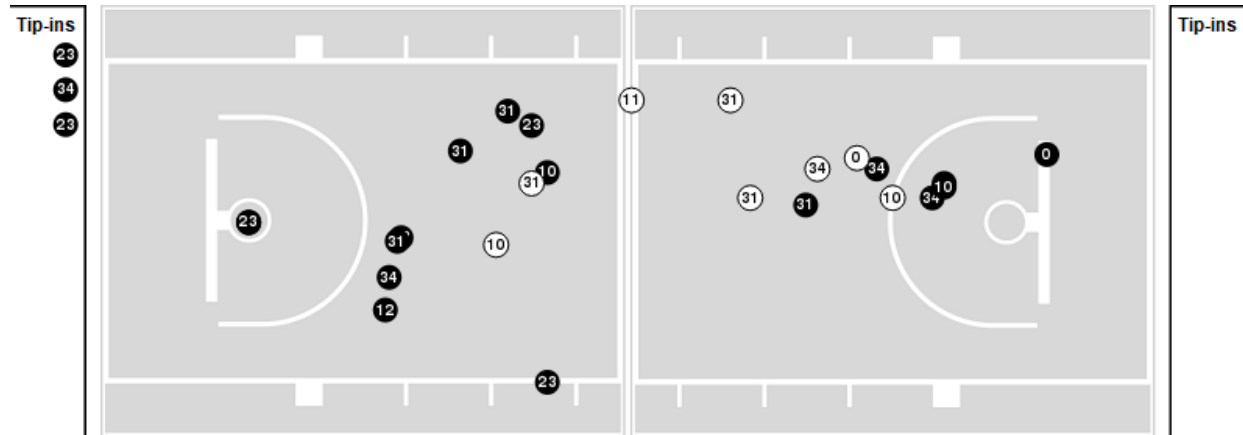
Players => 0, 1, 2, 3, 4, 10, 11, 12, 14, 20, 21, 23, 25, 31, 34, 55FG Types=>AllResults=>All

**Kentucky**

**All Field Goals**



**Blow Up Chart**



● Made ○ Missed N - Player Number

Kentucky	M/A	%
Field Goals	23/49	47
2 Points	21/37	57
3 Points	2/12	17
Free Throws	23/32	72

Kentucky	M/A	%
Points in the Paint	34 (17 / 25)	68
Fast Break Points	5 (5/6)	83
Second Chance Points	17 (10/15)	67
Effective FG%	49	



**LSU at Kentucky**

02/23/22 Rupp Arena, Lexington  
2021-22 Men's Basketball

**Game Time:** 9:00 PM  
**Game Duration:** 2:26  
**Attendance:** 20,199

**Officials:** Terry Oglesby, Byron Jarrett, Patrick Evans

**LSU**

Lineup	Quarter On	Time On	Quarter Off	Time Off	Time on Court	Score	Score Diff	Reb	Stl	Tov	Ass	PPP
0- Murray B/ 1- Pinson X/ 4- Days D/ 5- Wilkinson M/ 15- Reid E/	1	20:00	1	17:38	02:22	3-5	-2	2	0	0	1	1.0000
0- Murray B/ 1- Pinson X/ 4- Days D/ 5- Wilkinson M/ 13- Eason T/	1	17:38	1	10:45	06:53	17-8	9	5	2	0	2	1.4310
1- Pinson X/ 2- Gaines E/ 3- Fudge A/ 4- Days D/ 13- Eason T/	1	10:45	1	07:42	03:03	5-2	3	2	0	0	1	1.2500
1- Pinson X/ 2- Gaines E/ 3- Fudge A/ 4- Days D/ 15- Reid E/	1	07:42	1	07:01	00:41	2-1	1	0	0	0	0	2.0000
0- Murray B/ 1- Pinson X/ 2- Gaines E/ 4- Days D/ 15- Reid E/	1	07:01	1	05:23	01:38	0-2	-2	1	0	2	0	0.0000
0- Murray B/ 2- Gaines E/ 4- Days D/ 5- Wilkinson M/ 15- Reid E/	1	05:23	1	03:04	02:19	2-1	1	2	0	2	1	0.6667
0- Murray B/ 1- Pinson X/ 4- Days D/ 5- Wilkinson M/ 15- Reid E/	1	03:04	1	01:56	01:08	0-0	0	2	0	0	0	0.0000
0- Murray B/ 2- Gaines E/ 4- Days D/ 5- Wilkinson M/ 15- Reid E/	1	01:56	1	00:56	01:00	0-2	-2	1	0	1	0	0.0000
1- Pinson X/ 2- Gaines E/ 4- Days D/ 5- Wilkinson M/ 15- Reid E/	1	00:56	1	00:31	00:25	2-0	2	0	0	0	0	1.5152
0- Murray B/ 2- Gaines E/ 4- Days D/ 5- Wilkinson M/ 15- Reid E/	1	00:31	1	00:07	00:24	0-1	-1	0	0	0	0	0.0000
0- Murray B/ 1- Pinson X/ 2- Gaines E/ 4- Days D/ 15- Reid E/	1	00:07	2	20:00	00:07	0-1	-1	0	0	0	0	0.0000
0- Murray B/ 1- Pinson X/ 4- Days D/ 5- Wilkinson M/ 15- Reid E/	2	20:00	2	16:52	03:08	5-8	-3	2	0	0	2	1.0000
0- Murray B/ 1- Pinson X/ 4- Days D/ 5- Wilkinson M/ 13- Eason T/	2	16:52	2	15:41	01:11	0-5	-5	0	0	0	0	0.0000
0- Murray B/ 1- Pinson X/ 2- Gaines E/ 4- Days D/ 13- Eason T/	2	15:41	2	14:29	01:12	2-3	-1	0	0	0	0	2.2727
0- Murray B/ 1- Pinson X/ 2- Gaines E/ 4- Days D/ 15- Reid E/	2	14:29	2	11:57	02:32	2-6	-4	3	1	0	0	0.5000
1- Pinson X/ 2- Gaines E/ 3- Fudge A/ 4- Days D/ 15- Reid E/	2	11:57	2	10:05	01:52	0-2	-2	1	0	1	0	0.0000
1- Pinson X/ 2- Gaines E/ 5- Wilkinson M/ 13- Eason T/ 15- Reid E/	2	10:05	2	09:42	00:23	2-0	2	0	0	0	0	2.2727
0- Murray B/ 2- Gaines E/ 5- Wilkinson M/ 13- Eason T/ 15- Reid E/	2	09:42	2	09:28	00:14	0-0	0	0	0	0	0	0.0000
0- Murray B/ 2- Gaines E/ 4- Days D/ 5- Wilkinson M/ 15- Reid E/	2	09:28	2	07:48	01:40	3-4	-1	0	2	1	0	1.0417
0- Murray B/ 1- Pinson X/ 2- Gaines E/ 4- Days D/ 15- Reid E/	2	07:48	2	04:39	03:09	3-9	-6	1	0	1	1	0.6757
0- Murray B/ 1- Pinson X/ 2- Gaines E/ 3- Fudge A/ 15- Reid E/	2	04:39	2	03:54	00:45	2-2	0	0	0	0	0	2.2727
0- Murray B/ 1- Pinson X/ 2- Gaines E/ 4- Days D/ 15- Reid E/	2	03:54	2	02:12	01:42	2-3	-1	0	0	0	0	1.0000
0- Murray B/ 1- Pinson X/ 2- Gaines E/ 4- Days D/ 5- Wilkinson M/	2	02:12	2	00:03	02:09	14-5	9	2	1	0	4	2.0710
1- Pinson X/ 2- Gaines E/ 4- Days D/ 5- Wilkinson M/ 11- Williams J/	2	00:03	2	00:00	00:03	0-1	-1	0	0	0	0	0.0000



**LSU at Kentucky**

02/23/22 Rupp Arena, Lexington  
2021-22 Men's Basketball

**Game Time:** 9:00 PM  
**Game Duration:** 2:26  
**Attendance:** 20,199

**Officials:** Terry Oglesby, Byron Jarrett, Patrick Evans

**Kentucky**

Lineup	Quarter On	Time On	Quarter Off	Time Off	Time on Court	Score	Score Diff	Reb	Stl	Tov	Ass	PPP
0- Toppin J/ 10- Mintz D/ 12- Brooks Jr. K/ 31- Grady K/ 34- Tshiebwe O/	1	20:00	1	15:19	04:41	8-11	-3	4	0	1	1	1.1628
0- Toppin J/ 10- Mintz D/ 31- Grady K/ 34- Tshiebwe O/ 55- Ware L/	1	15:19	1	12:49	02:30	3-3	0	3	0	1	0	0.6757
0- Toppin J/ 10- Mintz D/ 12- Brooks Jr. K/ 31- Grady K/ 34- Tshiebwe O/	1	12:49	1	10:45	02:04	2-6	-4	2	0	1	0	0.6667
0- Toppin J/ 11- Allen D/ 12- Brooks Jr. K/ 31- Grady K/ 34- Tshiebwe O/	1	10:45	1	09:23	01:22	2-5	-3	0	0	1	0	1.0000
0- Toppin J/ 11- Allen D/ 31- Grady K/ 34- Tshiebwe O/ 55- Ware L/	1	09:23	1	08:38	00:45	0-0	0	1	0	0	0	0.0000
10- Mintz D/ 23- Hopkins B/ 31- Grady K/ 34- Tshiebwe O/ 55- Ware L/	1	08:38	1	07:42	00:56	1-0	1	0	0	0	0	1.1364
0- Toppin J/ 10- Mintz D/ 23- Hopkins B/ 31- Grady K/ 34- Tshiebwe O/	1	07:42	1	05:40	02:02	2-2	0	1	1	0	0	1.0638
0- Toppin J/ 10- Mintz D/ 12- Brooks Jr. K/ 31- Grady K/ 34- Tshiebwe O/	1	05:40	1	00:31	05:09	3-2	1	3	2	0	0	0.4360
0- Toppin J/ 4- Collins D/ 10- Mintz D/ 31- Grady K/ 34- Tshiebwe O/	1	00:31	1	00:07	00:24	2-2	0	0	0	0	0	2.2727
0- Toppin J/ 4- Collins D/ 10- Mintz D/ 11- Allen D/ 31- Grady K/	1	00:07	2	20:00	00:07	0-0	0	1	0	0	0	0.0000
0- Toppin J/ 10- Mintz D/ 12- Brooks Jr. K/ 31- Grady K/ 34- Tshiebwe O/	2	20:00	2	18:30	01:30	5-2	3	2	0	0	0	1.7361
0- Toppin J/ 10- Mintz D/ 23- Hopkins B/ 31- Grady K/ 34- Tshiebwe O/	2	18:30	2	11:57	06:33	17-7	10	10	0	1	1	1.4605
0- Toppin J/ 10- Mintz D/ 12- Brooks Jr. K/ 31- Grady K/ 34- Tshiebwe O/	2	11:57	2	08:39	03:18	5-5	0	2	0	2	0	0.9398
0- Toppin J/ 4- Collins D/ 10- Mintz D/ 12- Brooks Jr. K/ 31- Grady K/	2	08:39	2	07:48	00:51	1-0	1	0	1	1	0	0.6944
0- Toppin J/ 10- Mintz D/ 12- Brooks Jr. K/ 31- Grady K/ 34- Tshiebwe O/	2	07:48	2	06:56	00:52	2-0	2	2	0	0	0	2.0000
0- Toppin J/ 10- Mintz D/ 23- Hopkins B/ 31- Grady K/ 34- Tshiebwe O/	2	06:56	2	01:36	05:20	13-9	4	4	0	1	1	1.7760
0- Toppin J/ 10- Mintz D/ 12- Brooks Jr. K/ 31- Grady K/ 34- Tshiebwe O/	2	01:36	2	01:25	00:11	1-3	-2	0	0	0	0	2.2727
0- Toppin J/ 10- Mintz D/ 12- Brooks Jr. K/ 23- Hopkins B/ 31- Grady K/	2	01:25	2	01:17	00:08	1-1	0	0	0	0	0	2.2727
0- Toppin J/ 10- Mintz D/ 12- Brooks Jr. K/ 31- Grady K/ 34- Tshiebwe O/	2	01:17	2	00:34	00:42	0-6	-6	0	0	3	0	0.0000
0- Toppin J/ 10- Mintz D/ 12- Brooks Jr. K/ 23- Hopkins B/ 31- Grady K/	2	00:34	2	00:03	00:31	2-2	0	1	0	0	0	2.2727
0- Toppin J/ 10- Mintz D/ 23- Hopkins B/ 31- Grady K/ 34- Tshiebwe O/	2	00:03	2	00:03	00:01	1-0	1	0	0	0	0	1.1364
0- Toppin J/ 10- Mintz D/ 12- Brooks Jr. K/ 23- Hopkins B/ 31- Grady K/	2	00:03	2	00:00	00:03	0-0	0	0	0	0	0	0.0000



**LSU at Kentucky**

02/23/22 Rupp Arena, Lexington  
2021-22 Men's Basketball

**Game Time:** 9:00 PM  
**Game Duration:** 2:26  
**Attendance:** 20,199

**Officials:** Terry Oglesby, Byron Jarrett, Patrick Evans

**LSU**

Lineup	Time	Score	Score Diff	Pts/Min	Reb	Stl	Tov	Ass	PPP
0- Murray B/ 1- Pinson X/ 2- Gaines E/ 4- Days D/ 15- Reid E/	09:08	7-21	-14	0.7664	5	1	3	1	0.5208
0- Murray B/ 1- Pinson X/ 4- Days D/ 5- Wilkinson M/ 13- Eason T/	08:04	17-13	4	2.1074	5	2	0	2	1.2248
0- Murray B/ 1- Pinson X/ 4- Days D/ 5- Wilkinson M/ 15- Reid E/	06:38	8-13	-5	1.2060	6	0	0	3	0.8000
0- Murray B/ 2- Gaines E/ 4- Days D/ 5- Wilkinson M/ 15- Reid E/	05:23	5-8	-3	0.9288	3	2	4	1	0.7267
1- Pinson X/ 2- Gaines E/ 3- Fudge A/ 4- Days D/ 13- Eason T/	03:03	5-2	3	1.6393	2	0	0	1	1.2500
1- Pinson X/ 2- Gaines E/ 3- Fudge A/ 4- Days D/ 15- Reid E/	02:33	2-3	-1	0.7843	1	0	1	0	0.5000
0- Murray B/ 1- Pinson X/ 2- Gaines E/ 4- Days D/ 5- Wilkinson M/	02:09	14-5	9	6.5116	2	1	0	4	2.0710
0- Murray B/ 1- Pinson X/ 2- Gaines E/ 4- Days D/ 13- Eason T/	01:12	2-3	-1	1.6667	0	0	0	0	2.2727
0- Murray B/ 1- Pinson X/ 2- Gaines E/ 3- Fudge A/ 15- Reid E/	00:45	2-2	0	2.6667	0	0	0	0	2.2727
1- Pinson X/ 2- Gaines E/ 4- Days D/ 5- Wilkinson M/ 15- Reid E/	00:25	2-0	2	4.8000	0	0	0	0	1.5152
1- Pinson X/ 2- Gaines E/ 5- Wilkinson M/ 13- Eason T/ 15- Reid E/	00:23	2-0	2	5.2174	0	0	0	0	2.2727
0- Murray B/ 2- Gaines E/ 5- Wilkinson M/ 13- Eason T/ 15- Reid E/	00:14	0-0	0	0.0000	0	0	0	0	0.0000
1- Pinson X/ 2- Gaines E/ 4- Days D/ 5- Wilkinson M/ 11- Williams J/	00:03	0-1	-1	0.0000	0	0	0	0	0.0000



**LSU at Kentucky**

02/23/22 Rupp Arena, Lexington  
2021-22 Men's Basketball

**Game Time:** 9:00 PM  
**Game Duration:** 2:26  
**Attendance:** 20,199

**Officials:** Terry Oglesby, Byron Jarrett, Patrick Evans

**Kentucky**

Lineup	Time	Score	Score Diff	Pts/Min	Reb	Stl	Tov	Ass	PPP
0- Toppin J/ 10- Mintz D/ 12- Brooks Jr. K/ 31- Grady K/ 34- Tshiebwe O/	18:27	26-35	-9	1.4092	15	2	7	1	0.8844
0- Toppin J/ 10- Mintz D/ 23- Hopkins B/ 31- Grady K/ 34- Tshiebwe O/	13:56	33-18	15	2.3684	15	1	2	2	1.5193
0- Toppin J/ 10- Mintz D/ 31- Grady K/ 34- Tshiebwe O/ 55- Ware L/	02:30	3-3	0	1.2000	3	0	1	0	0.6757
0- Toppin J/ 11- Allen D/ 12- Brooks Jr. K/ 31- Grady K/ 34- Tshiebwe O/	01:22	2-5	-3	1.4634	0	0	1	0	1.0000
10- Mintz D/ 23- Hopkins B/ 31- Grady K/ 34- Tshiebwe O/ 55- Ware L/	00:56	1-0	1	1.0714	0	0	0	0	1.1364
0- Toppin J/ 4- Collins D/ 10- Mintz D/ 12- Brooks Jr. K/ 31- Grady K/	00:51	1-0	1	1.1765	0	1	1	0	0.6944
0- Toppin J/ 11- Allen D/ 31- Grady K/ 34- Tshiebwe O/ 55- Ware L/	00:45	0-0	0	0.0000	1	0	0	0	0.0000
0- Toppin J/ 10- Mintz D/ 12- Brooks Jr. K/ 23- Hopkins B/ 31- Grady K/	00:42	3-3	0	4.2857	1	0	0	0	2.2727
0- Toppin J/ 4- Collins D/ 10- Mintz D/ 31- Grady K/ 34- Tshiebwe O/	00:24	2-2	0	5.0000	0	0	0	0	2.2727
0- Toppin J/ 4- Collins D/ 10- Mintz D/ 11- Allen D/ 31- Grady K/	00:07	0-0	0	0.0000	1	0	0	0	0.0000